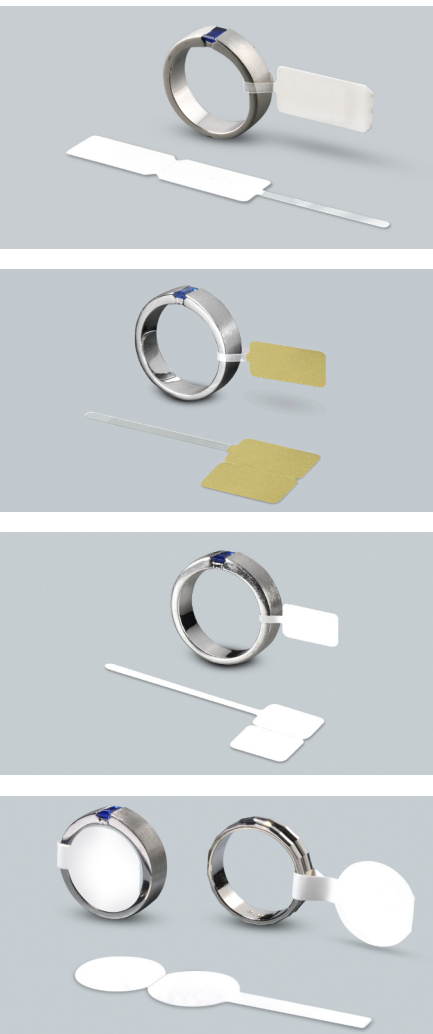



# Schlaufen-Etiketten

Labels with loop

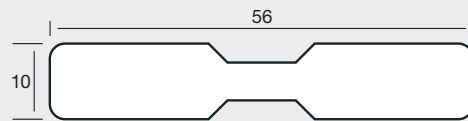
Étiquettes avec lanière



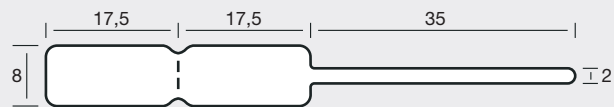
- B** Anzahl Bahnen |  
Number of rows |  
Nombre de poses
- BB** Bahnbreite |  
Width of row |  
Largeur de la bande
- T** Etikettenvorschub (Zoll) |  
Label feed (inch) |  
Avance des étiquettes (pouce)
-  Klassische Etiketten für die manuelle  
Beschriftung | Classic labels for  
writing on by hand | Étiquettes clas-  
siques pour inscription manuelle
- \*** Mit durchgestanzten Löchern |  
With punched holes |  
Avec des trous entièrement percés



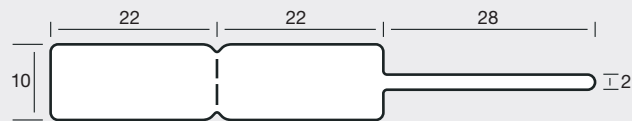
**44 1056/PE** 



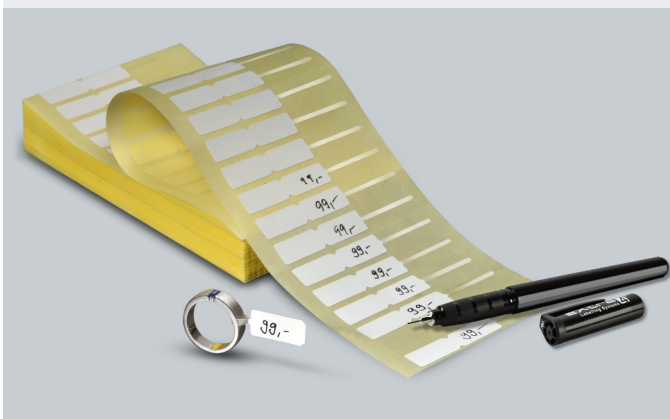
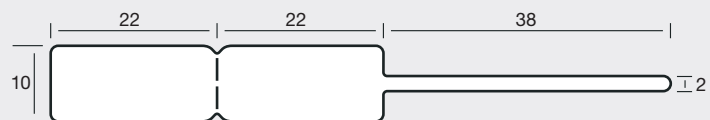
**44 870 XHB** 



**44 1072 XHB** 



**44 1082 XHB** 



Im Polybeutel in Lagen gefaltet |  
in plastic bag, folded in layers |  
dans sachet plastique, plié en couches